



## About ENGLISH RIVER FIRST NATION

The English River First Nation (ERFN) is comprised of seven different Reserves including: Cree Lake, Porter Island, Elak Dase, Knee Lake, Dipper Rapids, Wapachewunak, and LaPlonge. The home reserve is located in Patuanak, near the Churchill River. The river provides transportation and allows for fishing, hunting and gathering. It also provides economic opportunities for outfitting and tourism.

### HIGHLIGHTS AND OPPORTUNITIES

- On August 28, 1906, Chief William Apeis signed Treaty 10 on behalf of English River First Nation.
- ERFN thrives with many people owning their own businesses or being employed through the First Nation.
- Tron Construction & Mining, which is owned and operated by ERFN, provides general contracting services for construction projects and maintenance contracts, as well as heavy earth moving, electrical, mechanical, pipeline and environmental cleanup for the mining sector. It also provides water hauling and pumping services.
- ERFN also operates Grasswood Travel and Business Centre located just south of Saskatoon, which includes 80,000 square feet of office space, a gas bar and convenience store, two commercial strip malls, and other warehousing buildings.
- Forestry and mining are other key partners and employers of ERFN members, as well as Keewatin Yatthe Regional Health Authority.

### DEMOGRAPHICS

Total Population: 1, 559 persons

On Reserve: 805 persons/ Off Reserve: 754 persons

Total Reserves/Settlements/Villages: 62,445 acres

(Source: Aboriginal Affairs and Northern Development Canada, [http://pse5-esd5.ainc-inac.gc.ca/fnp/Main/Search/FNMain.aspx?BAND\\_NUMBER=400&lang=eng](http://pse5-esd5.ainc-inac.gc.ca/fnp/Main/Search/FNMain.aspx?BAND_NUMBER=400&lang=eng))

### TRIBAL COUNCIL AFFILIATION

Meadow Lake Tribal Council Member

### ECONOMICS

#### IN SASKATOON REGION

<b>Land Holdings (Total)</b>	135 acres
Rural Reserve (Highway 11/Grasswood)	135 acres

**Status:** Partially developed. Further development options are being considered.

#### Employment (On Reserve)

Full Time, Part-Time, Seasonal Employee	n/a
---	-----

#### Business Developments - Current

Tron Construction & Mining	
Grasswood Travel and Business Centre	
Des Nedhe Development LP	
Grasswood Petro Canada	
English River Property Management	
Minetec Mining Supply Company	

#### Business Developments - Proposed

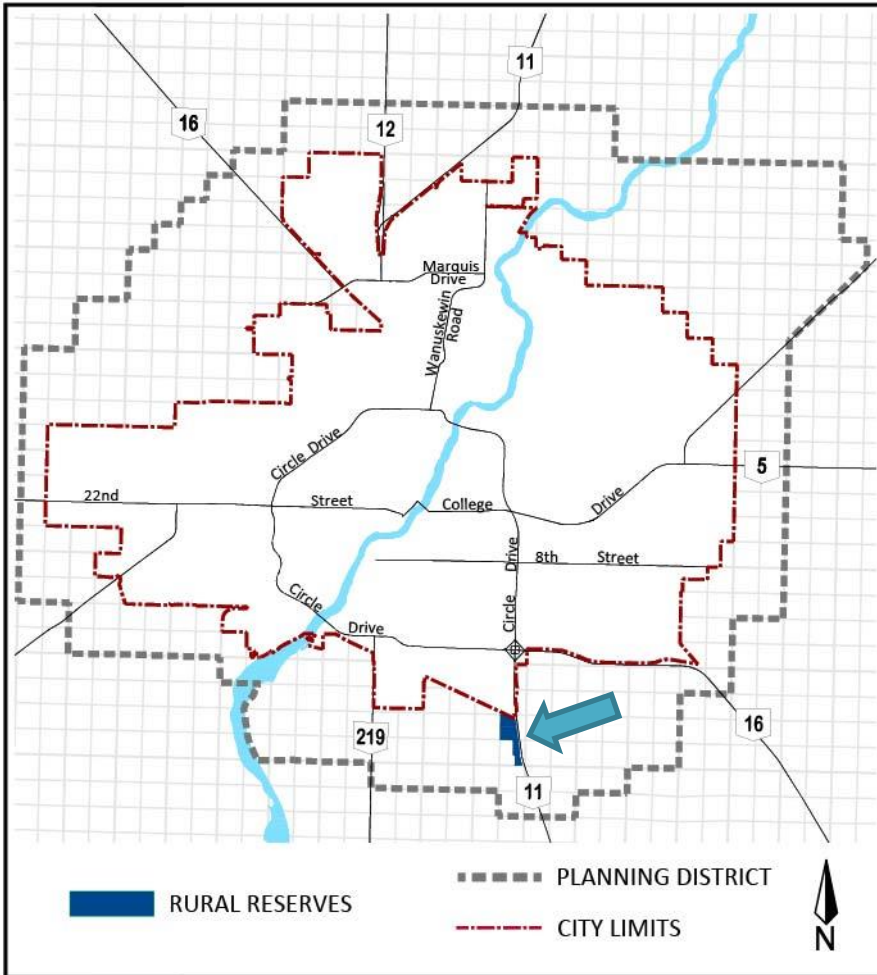
Hotel and Conference Centre (Grasswood)	
Office Building/Space (Grasswood)	

#### OUTSIDE SASKATOON REGION

Shop Easy & Gas Bar in Beauval, SK	
The Gas Bar and Convenience Store in Patuanak, SK	
Mudjatik Enterprises	

Source: English River First Nation.

English River First Nation Land Holdings  
 City of Saskatoon and Region  
 Approximately 135 acres



## HOME RESERVE INFORMATION

### Location

The home reserve is located in Patuanak (which is 250 kilometres north west of Meadow Lake, SK), west of the Shagwanew Rapids on the Churchill River, and is a Dene speaking community. It is accessible by Provincial Road 918.

### Services

Community facilities include: band office, Canada Post office, William Apeis Memorial band hall, St. Louis School, Great River Health Clinic, CPAT 89.9 radio station, youth centre, gas bar, fish plant, day care, Ovide G. McIntyre Memorial Arena and Curling Rink, St. Louis Roman Catholic Church, RCMP detachment, and Lein Wolverine Park.

### Education

Education has always been important to ERFN. Historically, children attended residential schools in Ile a la Crose and Beauval. A local elementary school, St. Louis School, was built in 1971, with a modern predecessor in 1995. In 2000, it was updated and expanded to include a high school, eliminating the need for students to travel outside the community for educational training.

## GOVERNANCE

Chief: Lawrence McIntyre  
 Councillors: Russ Black  
 Angie Campbell  
 Cecile Dawatsare  
 Louis Wolverine Jr.  
 Sandra Wolverine

Election Term: October 27, 2015 to  
 October 26, 2019

## CONTACT INFORMATION

English River First Nation  
 General Delivery, Patuanak, SK S0M 2H0  
 306-396-2066, 306-396-2055, Fax 306-396-2155  
[www.erfn.net](http://www.erfn.net)

Des Nedhe Developments (Saskatoon)  
 301-2555 Grasswood Road E., Saskatoon, SK S7T 0K1  
 306-652-4989, Fax 306-374-9131  
[info@desnedhe.com](mailto:info@desnedhe.com)

## For more information



**SREDA**  
**SASKATOON REGIONAL**  
**ECONOMIC DEVELOPMENT AUTHORITY**

City of Saskatoon, Planning and Development Division  
 306-975-3340 [regional.planning@saskatoon.ca](mailto:regional.planning@saskatoon.ca) [www.saskatoon.ca](http://www.saskatoon.ca)  
 Saskatoon Regional Economic Development Authority (SREDA)  
 306-664-0720 [info@sreda.com](mailto:info@sreda.com) [www.sreda.com](http://www.sreda.com)